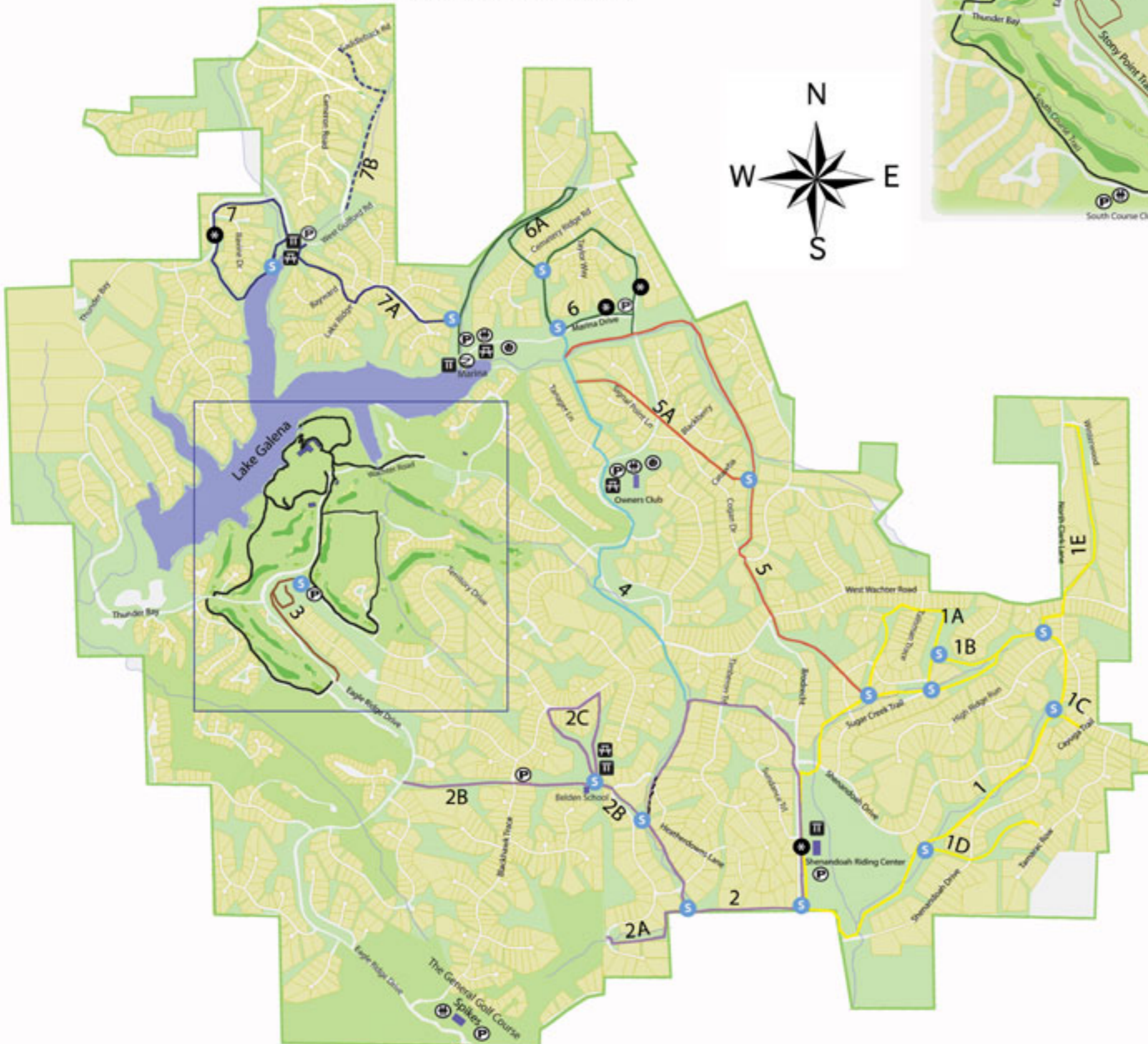


Trail Etiquette and Safety



- Only use trails alone after letting someone know where you are going and when you will return.
- Please stay on the trails; they are very near private property in some places.
- Hikers, horseback riders, and bicyclists share the trails. Hikers should make way for horses. Bicyclists should yield to hikers and horses.
- When approaching another trail user, greet them, particularly if you are planning to pass them.
- Dogs must be on leashes at all times.
- No motorized vehicles are allowed on the trails.
- Trails may be seasonally wet. Use appropriate footwear.
- When trails are soft and wet, please use for hiking only.
- Plants and animals on the Greenspace are protected. It is best to look but not touch. Some plants cause irritation and some can cause allergic reactions. Protect yourself.
- Wild animals should not be approached. Any wild animal that allows you to approach is likely to be injured or ill.
- Bluebird boxes should not be disturbed.
- Trail maintenance is ongoing. Please report any obstructions or concerns to (815) 777-2000 (Territory) or (815) 777-5000 (Resort)
- Thank you for keeping the trails litter free.
- Trails can be steep and difficult. Detailed, individual maps may be purchased at the Front Desk of the Resort, Resort Pool, or at the Territory Owners' Club.

Resort Core Trails



- | | |
|------------------|---------------|
| Rent Bikes | Boats |
| Lookout Platform | Hitching Post |
| Tennis | Rest Room |
| Stream | Trail Begins |
| Parking | Trail on Road |
| Picnic Tables | Trail Closed |

- Trail 1(loop), 1A, 1B, 1C, 1D, 1E
- Trail 2(loop), 2A, 2B, 2C
- Trail 3 (Paved)
- Trail 4
- Trail 5, 5A
- Trail 6(loop), 6A
- Trail 7(loop), 7A, 7B
- Resort Core Trails (Paved unless marked)